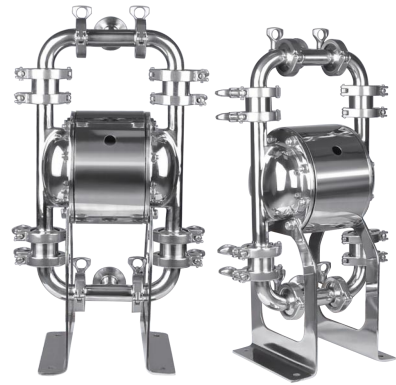


07

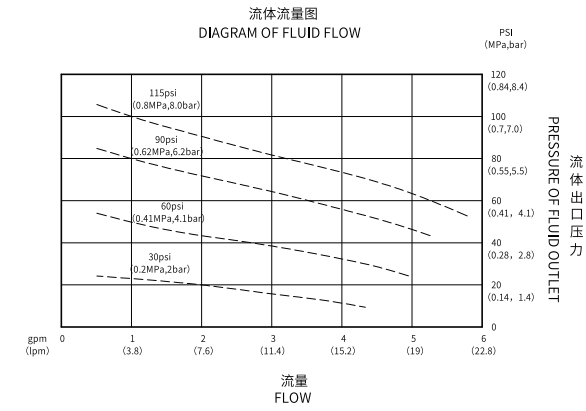
Q/DBW3  
卫生泵



## QBW3-25 不锈钢304



### 性能曲线图

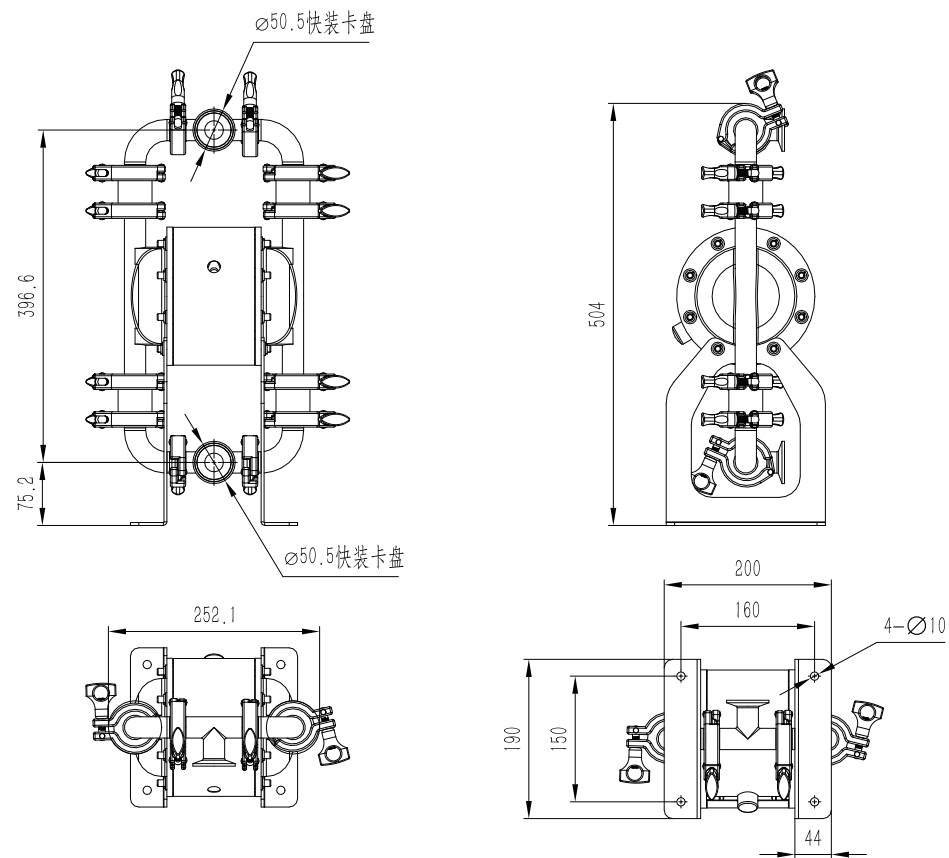


### 规格参数

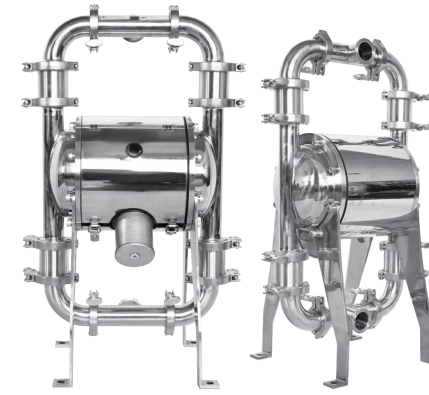
最大工作流量 Max. Flow	15 gpm (57 lpm)
最大工作压力 Max. Working Pressure	100 psi (0.7 Mpa, 7bar)
流体进口尺寸 Fluid Inlet Size	3/4 in. bsp (f) / 1 in. bsp (f)
流体出口尺寸 Fluid Outlet Size	3/4 in. bsp (f) / 1 in. bsp (f)
空气进口尺寸 Air Inlet Size	1/4 in. bsp (f)

最大虹吸高度 (干抽或湿抽) Max.Suction Height (dry suction or wet suction)	15 ft. (4.5 m)
最大输送固体颗粒 Max. Permitted Grain	3/32 in. (2.5 mm)
每往复流量 Every Reciprocating Flow	0.04 gal. (0.15 L)
最大往复速度 Max. Reciprocating Speed	400 cpm

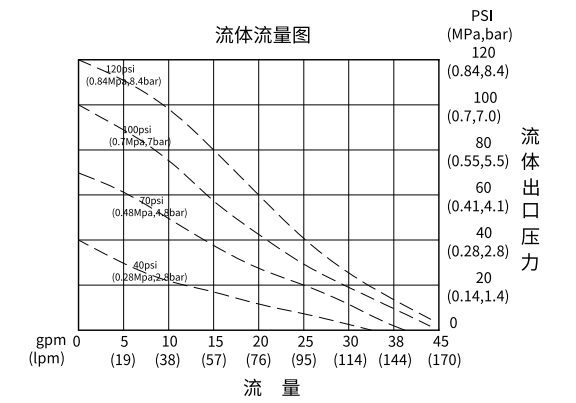
### 安装尺寸图



## QBW3-40 不锈钢304



### 性能曲线图

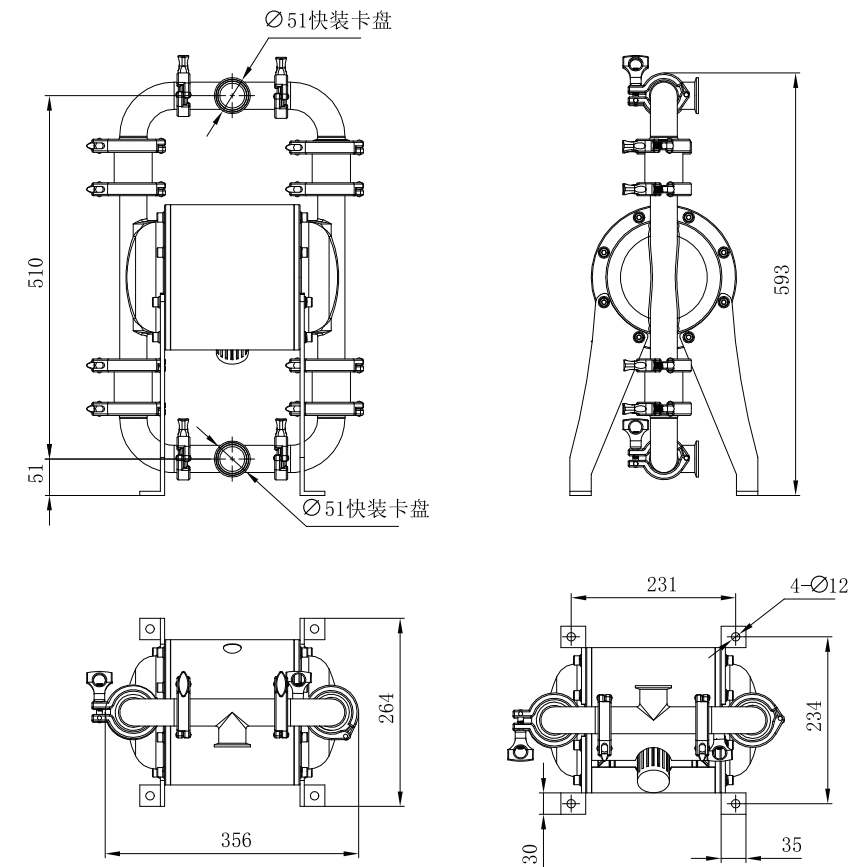


### 规格参数

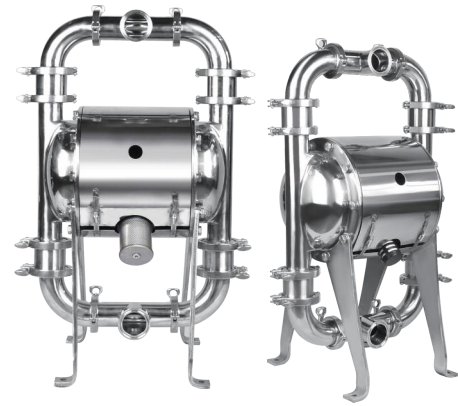
最大工作流量 Max. Flow	45 gpm (170 lpm)
最大工作压力 Max. Working Pressure	120 psi (0.84 Mpa, 8.4 bar)
流体进口尺寸 Fluid Inlet Size	1-1/4 in. bsp (f) / 1-1/2 in. bsp (f)
流体出口尺寸 Fluid Outlet Size	1-1/4 in. bsp (f) / 1-1/2 in. bsp (f)
空气进口尺寸 Air Inlet Size	1/2 in. bsp (f)

最大虹吸高度 (干抽或湿抽) Max.Suction Height (dry suction or wet suction)	18 ft. (5.48 m)
最大输送固体颗粒 Max. Permitted Grain	1/8 in. (3.2 mm)
每往复流量 Every Reciprocating Flow	0.15 gal. (0.57 L)
最大往复速度 Max. Reciprocating Speed	276 cpm

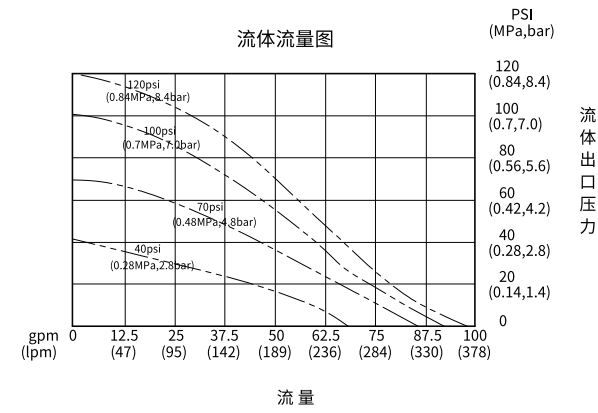
### 安装尺寸图



## QBW3-50 不锈钢304



### 性能曲线图

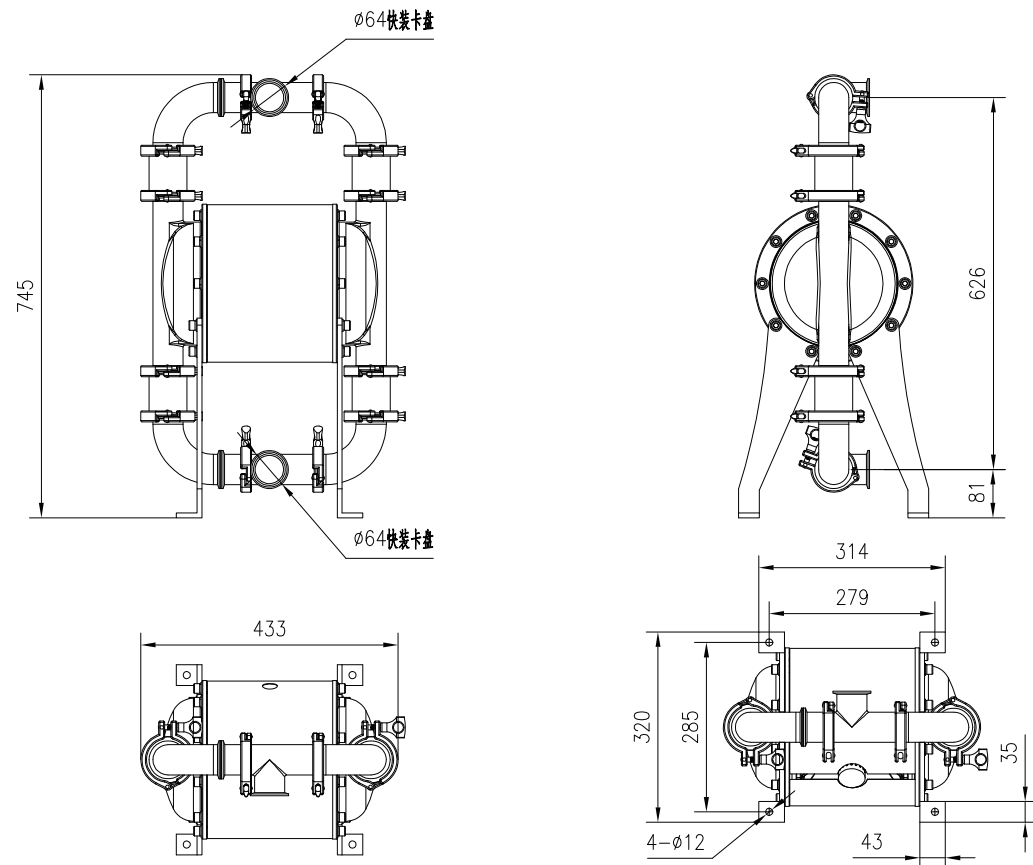


### 规格参数

最大工作流量 Max. Flow	100 gpm (378.5 lpm)
最大工作压力 Max. Working Pressure	120 psi (0.84 Mpa, 8.4 bar)
流体进口尺寸 Fluid Inlet Size	2 in. bsp (f) / 2-1/2 in. bsp (f)
流体出口尺寸 Fluid Outlet Size	2 in. bsp (f) / 2-1/2 in. bsp (f)
空气进口尺寸 Air Inlet Size	1/2 in. bsp (f)

最大虹吸高度 (干抽或湿抽) Max.Suction Height (dry suction or wet suction)	18 ft. (5.48 m)
最大输送固体颗粒 Max. Permitted Grain	3/16 in. (4.8 mm)
每往复流量 Every Reciprocating Flow	0.5 gal. (1.9 L)
最大往复速度 Max. Reciprocating Speed	200 cpm

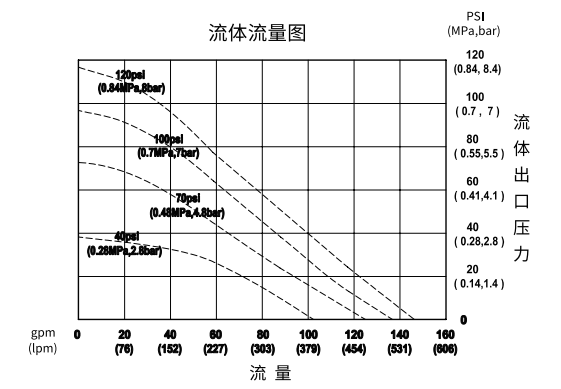
### 安装尺寸图



## QBW3-80 不锈钢304



### 性能曲线图



### 规格参数

最大工作流量 Max. Flow	150 gpm (568 lpm)
最大工作压力 Max. Working Pressure	120 psi (0.84 Mpa, 8.4 bar)
流体进口尺寸 Fluid Inlet Size	3 in. bsp (f) / 4 in. bsp (f)
流体出口尺寸 Fluid Outlet Size	3 in. bsp (f) / 4 in. bsp (f)
空气进口尺寸 Air Inlet Size	1/2 in. bsp (f)

最大虹吸高度 (干抽或湿抽) Max.Suction Height (dry suction or wet suction)	18 ft. (5.48 m)
最大输送固体颗粒 Max. Permitted Grain	1/4 in. (6.4 mm)
每往复流量 Every Reciprocating Flow	1.03 gal. (3.90 L)
最大往复速度 Max. Reciprocating Speed	145 cpm

### 安装尺寸图

