

06

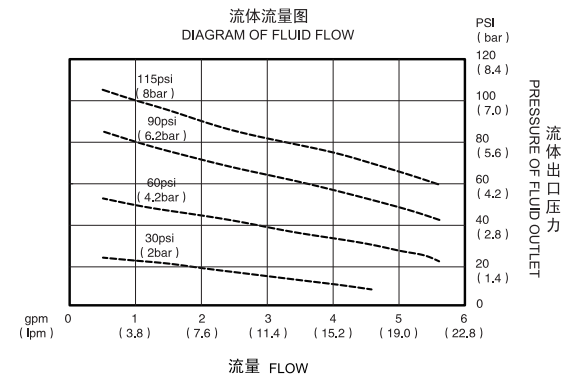
Q/DBY3
第三代隔膜泵



QBY3-10/15 铝合金/不锈钢/铸钢



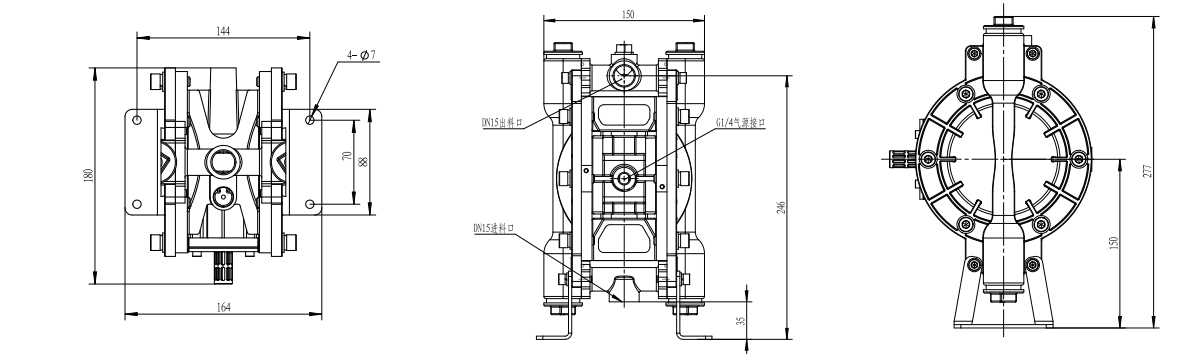
性能曲线图



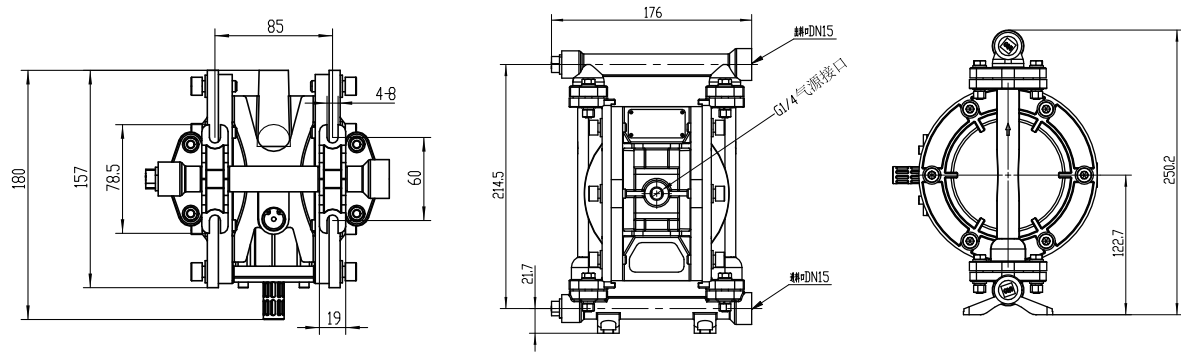
规格参数

最大工作流量 Max. Flow	5.8 gpm (22 lpm)	最大虹吸高度 (干抽或湿抽) Max.Suction Height (dry suction or wet suction)	113 ft. (4 m)
最大工作压力 Max. Working Pressure	100 psi (0.7 Mpa, 7 bar)	最大输送固体颗粒 Max. Permitted Grain	0.06 in. (1.5 mm)
流体进口尺寸 Fluid Inlet Size	3/8 in. bsp (f) / 1/2 in. bsp (f)	每往复流量 Every Reciprocating Flow	0.016 gal. (0.06L)
流体出口尺寸 Fluid Outlet Size	3/8 in. bsp (f) / 1/2 in. bsp (f)	最大往复速度 Max. Reciprocating Speed	372cpm
空气进口尺寸 Air Inlet Size	1/4 in. bsp (f)		

安装尺寸图



铝合金 Aluminum alloy

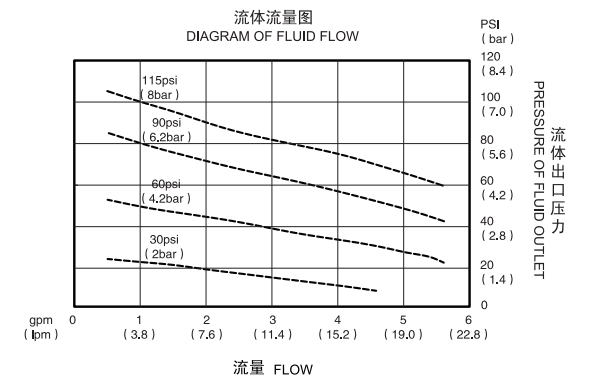


不锈钢/铸钢 Stainless steel/Cast steel

QBY3-10/15 塑料/氟塑料



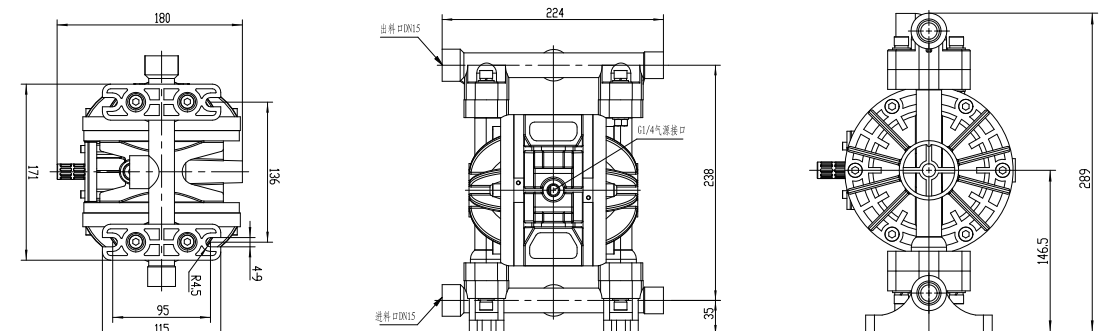
性能曲线图



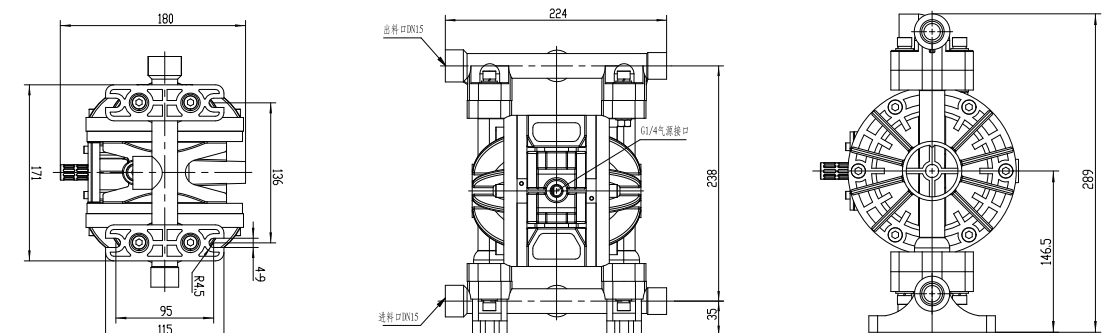
规格参数

最大工作流量 Max. Flow	5.8 gpm (22 lpm)	最大虹吸高度 (干抽或湿抽) Max.Suction Height (dry suction or wet suction)	113 ft. (4 m)
最大工作压力 Max. Working Pressure	100 psi (0.7 Mpa, 7 bar)	最大输送固体颗粒 Max. Permitted Grain	0.06 in. (1.5 mm)
流体进口尺寸 Fluid Inlet Size	3/8 in. bsp (f) / 1/2 in. bsp (f)	每往复流量 Every Reciprocating Flow	0.016 gal. (0.06L)
流体出口尺寸 Fluid Outlet Size	3/8 in. bsp (f) / 1/2 in. bsp (f)	最大往复速度 Max. Reciprocating Speed	372cpm
空气进口尺寸 Air Inlet Size	1/4 in. bsp (f)		

安装尺寸图



塑料 PP

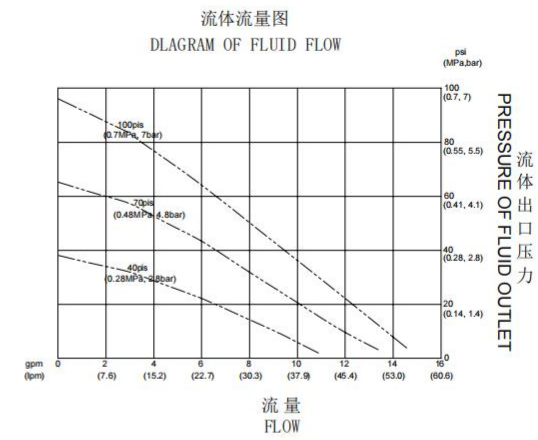


氟塑料 PVDF

QBY3-20/25 铝合金/不锈钢/铸钢



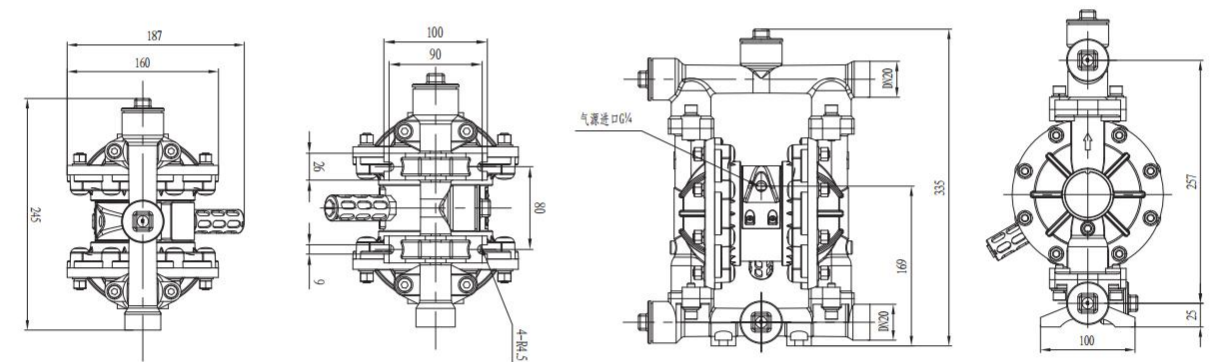
性能曲线图



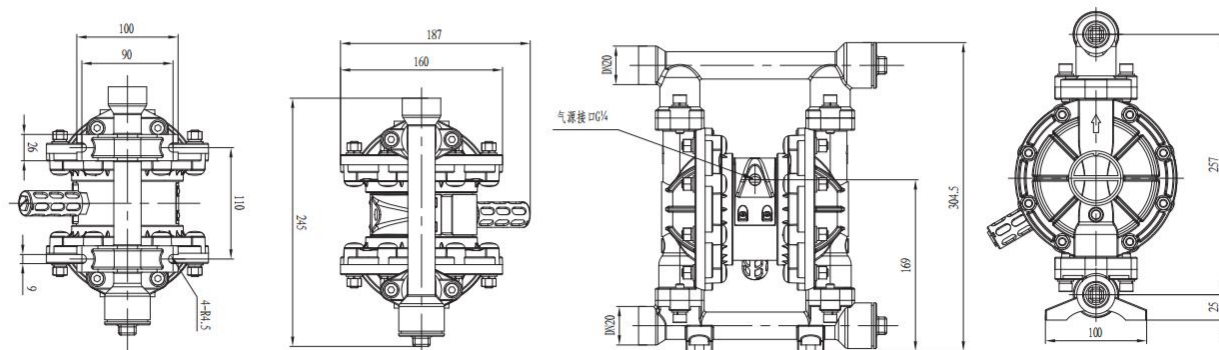
规格参数

最大工作流量 Max. Flow	15 gpm (57 lpm)	最大虹吸高度 (干抽或湿抽) Max.Suction Height (dry suction or wet suction)	15 ft. (4.5 m)
最大工作压力 Max. Working Pressure	100 psi (0.7 Mpa, 7bar)	最大输送固体颗粒 Max. Permitted Grain	3/32 in. (2.5 mm)
流体进口尺寸 Fluid Inlet Size	3/4 in. bsp (f) / 1 in. bsp (f)	每往复流量 Every Reciprocating Flow	0.04 gal. (0.15 L)
流体出口尺寸 Fluid Outlet Size	3/4 in. bsp (f) / 1 in. bsp (f)	最大往复速度 Max. Reciprocating Speed	400 cpm
空气进口尺寸 Air Inlet Size	1/4 in. bsp (f)		

安装尺寸图



铝合金 Aluminum alloy

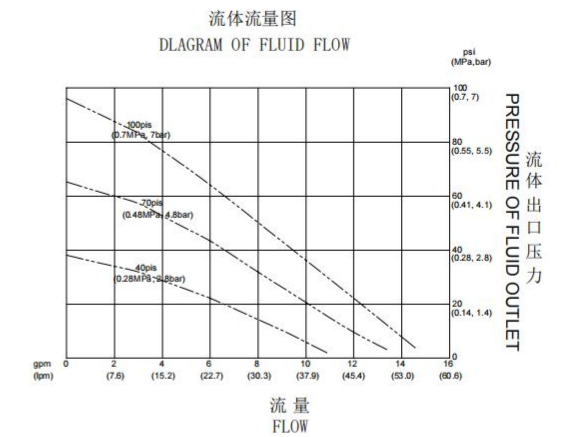


不锈钢/铸钢 Stainless steel/Cast steel

QBY3-20/25 塑料/氟塑料



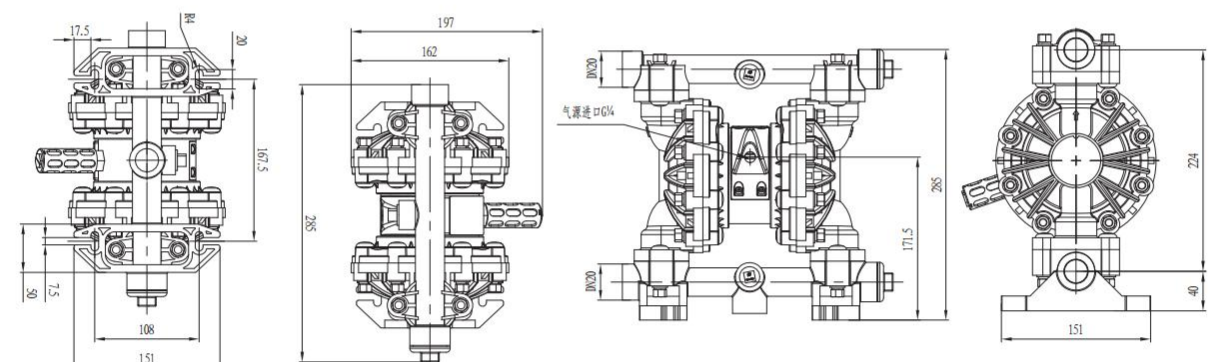
性能曲线图



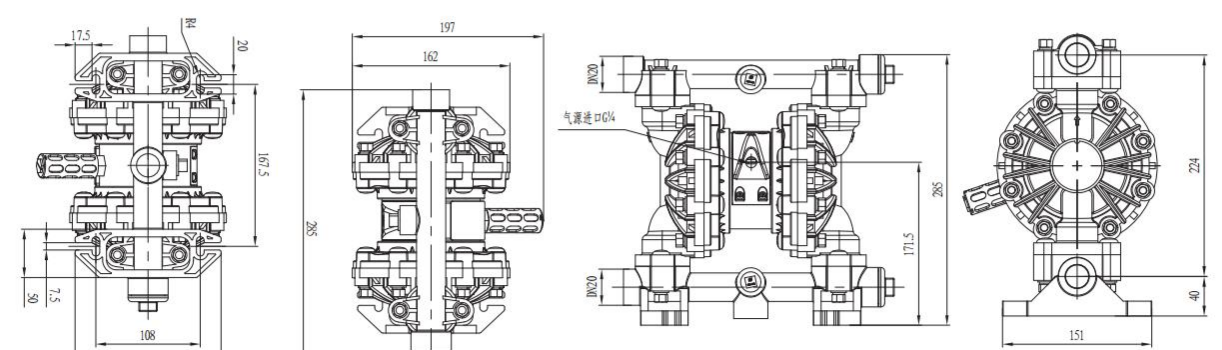
规格参数

最大工作流量 Max. Flow	15 gpm (57 lpm)	最大虹吸高度 (干抽或湿抽) Max.Suction Height (dry suction or wet suction)	15 ft. (4.5 m)
最大工作压力 Max. Working Pressure	100 psi (0.7 Mpa, 7bar)	最大输送固体颗粒 Max. Permitted Grain	3/32 in. (2.5 mm)
流体进口尺寸 Fluid Inlet Size	3/4 in. bsp (f) / 1 in. bsp (f)	每往复流量 Every Reciprocating Flow	0.04 gal. (0.15 L)
流体出口尺寸 Fluid Outlet Size	3/4 in. bsp (f) / 1 in. bsp (f)	最大往复速度 Max. Reciprocating Speed	400 cpm
空气进口尺寸 Air Inlet Size	1/4 in. bsp (f)		

安装尺寸图



塑料 PP

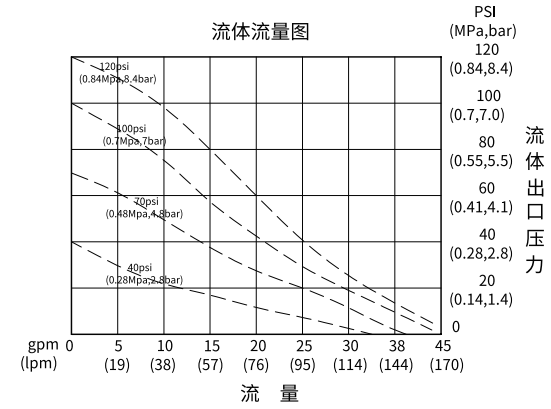


氟塑料 PVDF

QBY3-32/40 铝合金/不锈钢/球铁



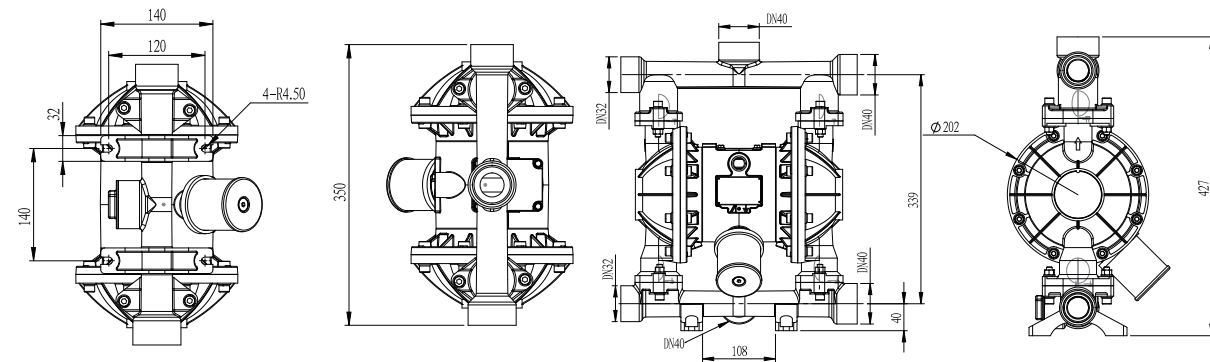
性能曲线图



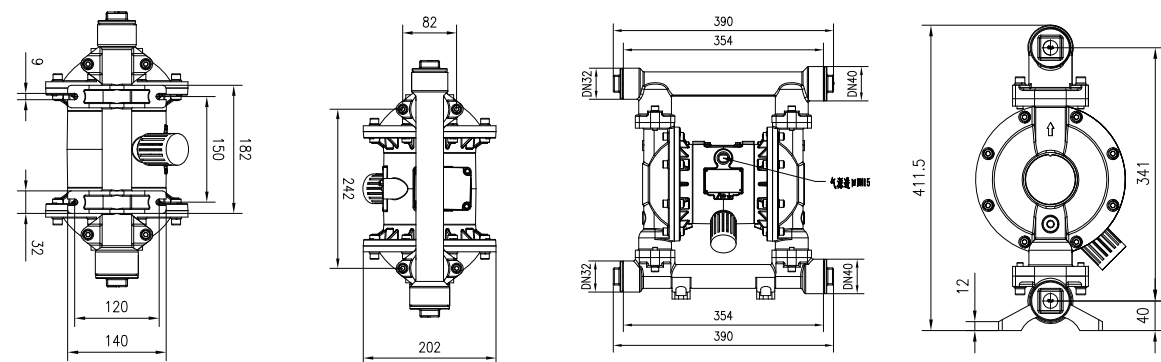
规格参数

最大工作流量 Max. Flow	45 gpm (170 lpm)	最大虹吸高度 (干抽或湿抽) Max.Suction Height (dry suction or wet suction)	18 ft. (5.48 m)
最大工作压力 Max. Working Pressure	120 psi (0.84 Mpa, 8.4 bar)	最大输送固体颗粒 Max. Permitted Grain	1/8 in. (3.2 mm)
流体进口尺寸 Fluid Inlet Size	1-1/4 in. bsp (f) / 1-1/2 in. bsp (f)	每往复流量 Every Reciprocating Flow	0.15 gal. (0.57 L)
流体出口尺寸 Fluid Outlet Size	1-1/4 in. bsp (f) / 1-1/2 in. bsp (f)	最大往复速度 Max. Reciprocating Speed	276 cpm
空气进口尺寸 Air Inlet Size	1/2 in. bsp (f)		

安装尺寸图



铝合金/不锈钢 Aluminum alloy / Stainless steel

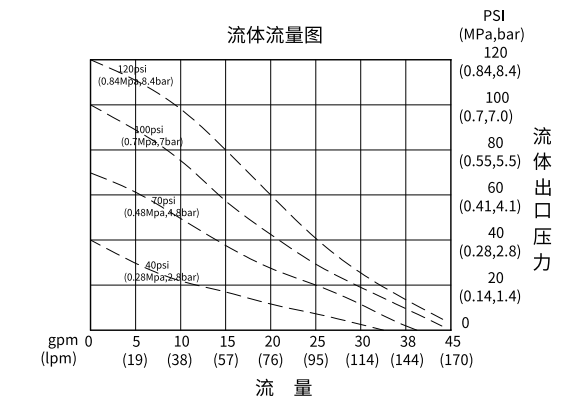


球铁 Nodular cast iron

QBY3-32/40 塑料/氟塑料/衬氟



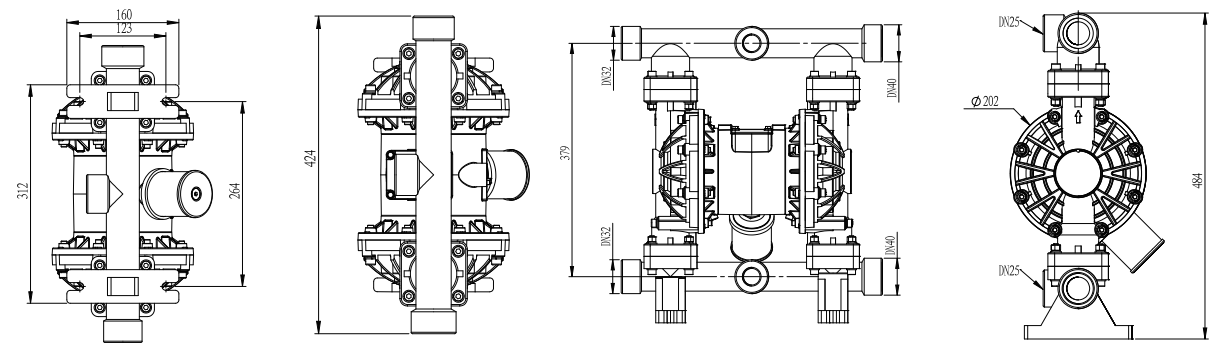
性能曲线图



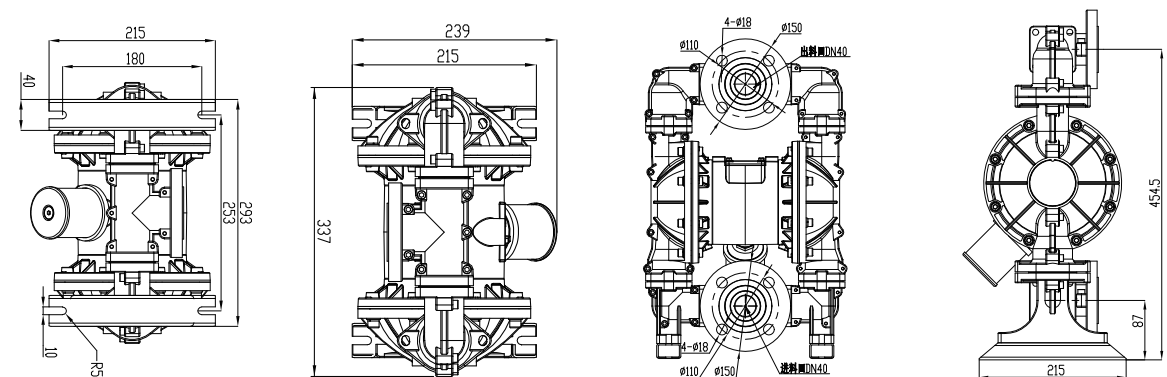
规格参数

最大工作流量 Max. Flow	45 gpm (170 lpm)	最大虹吸高度 (干抽或湿抽) Max.Suction Height (dry suction or wet suction)	18 ft. (5.48 m)
最大工作压力 Max. Working Pressure	120 psi (0.84 Mpa, 8.4 bar)	最大输送固体颗粒 Max. Permitted Grain	1/8 in. (3.2 mm)
流体进口尺寸 Fluid Inlet Size	1-1/4 in. bsp (f) / 1-1/2 in. bsp (f)	每往复流量 Every Reciprocating Flow	0.15 gal. (0.57 L)
流体出口尺寸 Fluid Outlet Size	1-1/4 in. bsp (f) / 1-1/2 in. bsp (f)	最大往复速度 Max. Reciprocating Speed	276 cpm
空气进口尺寸 Air Inlet Size	1/2 in. bsp (f)		

安装尺寸图



塑料/氟塑料 PP/PVDF

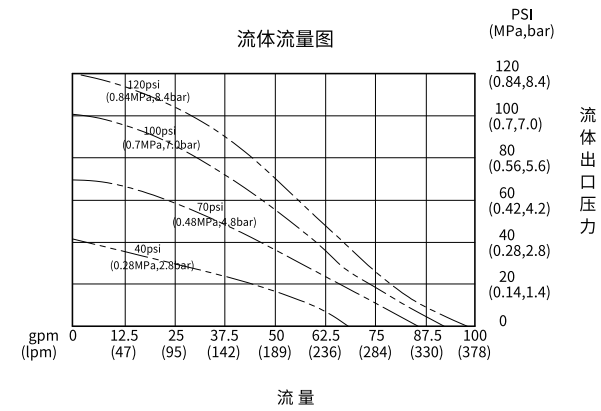


衬氟 Lining PVDF

QBY3-50/65 铝合金/不锈钢/球铁



性能曲线图

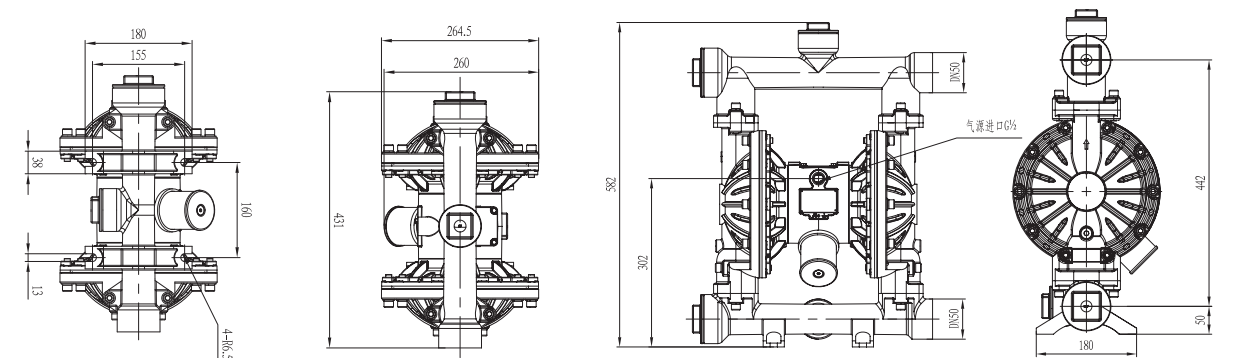


规格参数

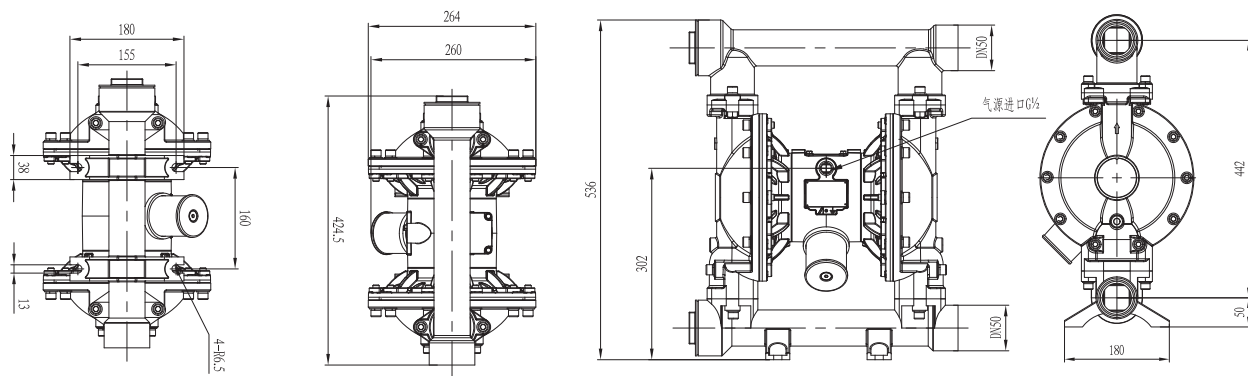
最大工作流量 Max. Flow	100 gpm (378.5 lpm)
最大工作压力 Max. Working Pressure	120 psi (0.84 Mpa, 8.4 bar)
流体进口尺寸 Fluid Inlet Size	2 in. bsp (f) / 2-1/2 in. bsp (f)
流体出口尺寸 Fluid Outlet Size	2 in. bsp (f) / 2-1/2 in. bsp (f)
空气进口尺寸 Air Inlet Size	1/2 in. bsp (f)

最大虹吸高度 (干抽或湿抽) Max.Suction Height (dry suction or wet suction)	18 ft. (5.48 m)
最大输送固体颗粒 Max. Permitted Grain	3/16 in. (4.8 mm)
每往复流量 Every Reciprocating Flow	0.5 gal. (1.9 L)
最大往复速度 Max. Reciprocating Speed	200 cpm

安装尺寸图

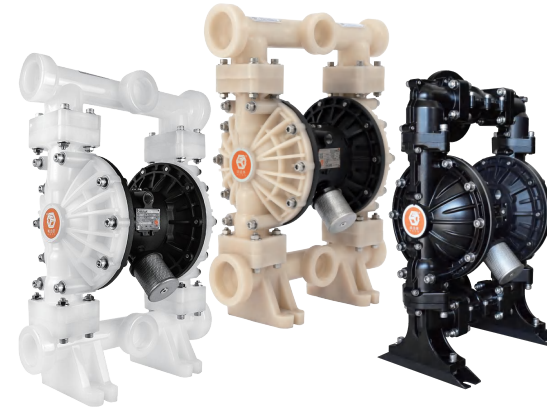


铝合金 Aluminum alloy

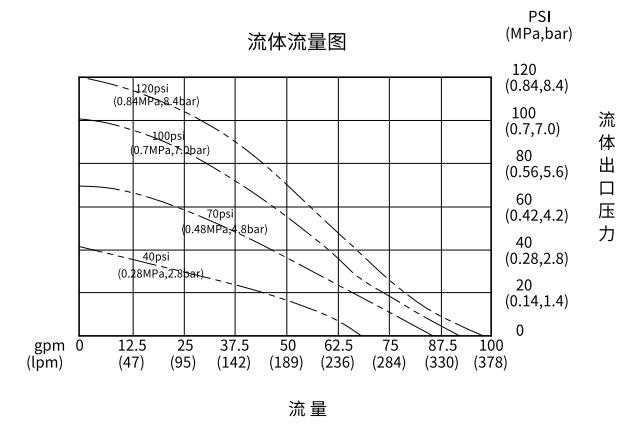


不锈钢/球铁 Stainless steel/Nodular cast iron

QBY3-50/65 塑料/氟塑料/衬氟



性能曲线图

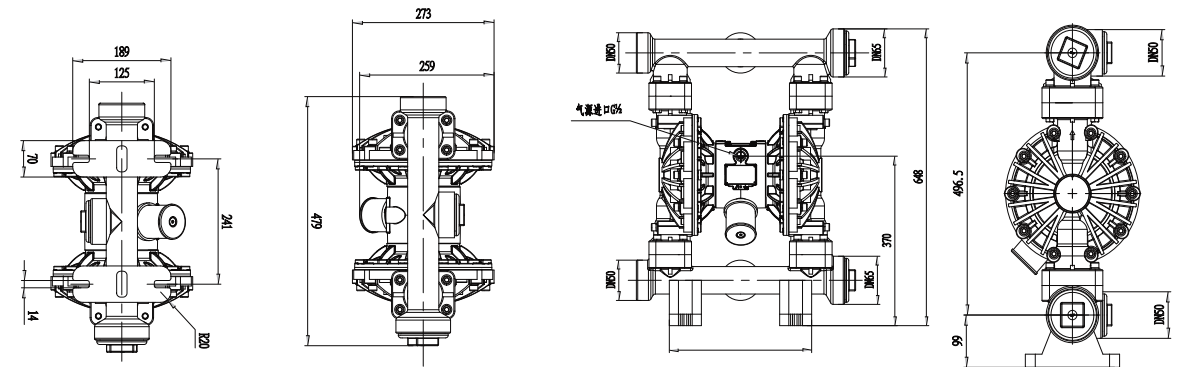


规格参数

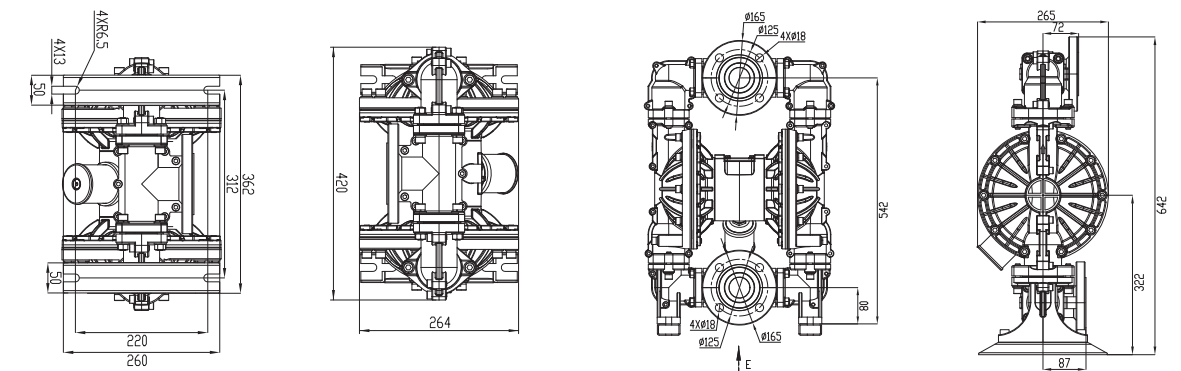
最大工作流量 Max. Flow	100 gpm (378.5 lpm)
最大工作压力 Max. Working Pressure	120 psi (0.84 Mpa, 8.4 bar)
流体进口尺寸 Fluid Inlet Size	2 in. bsp (f) / 2-1/2 in. bsp (f)
流体出口尺寸 Fluid Outlet Size	2 in. bsp (f) / 2-1/2 in. bsp (f)
空气进口尺寸 Air Inlet Size	1/2 in. bsp (f)

最大虹吸高度 (干抽或湿抽) Max.Suction Height (dry suction or wet suction)	18 ft. (5.48 m)
最大输送固体颗粒 Max. Permitted Grain	3/16 in. (4.8 mm)
每往复流量 Every Reciprocating Flow	0.5 gal. (1.9 L)
最大往复速度 Max. Reciprocating Speed	200 cpm

安装尺寸图



塑料/氟塑料 PP/PVDF

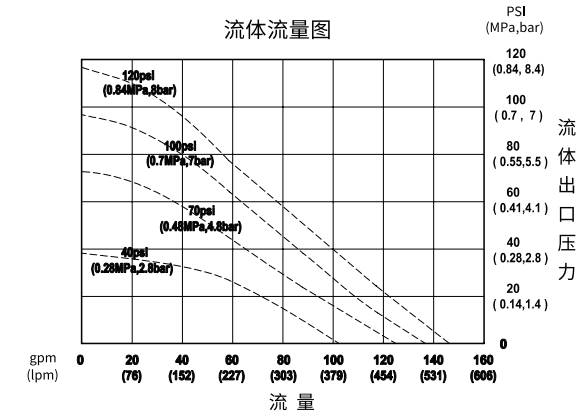


衬氟 Lining PVDF

QBY3-80/100 铝合金/不锈钢/球铁



性能曲线图

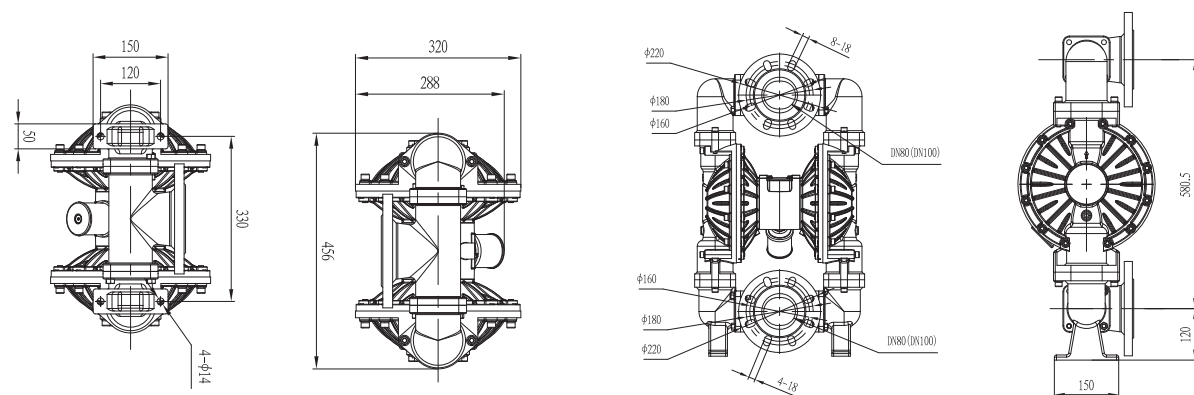


规格参数

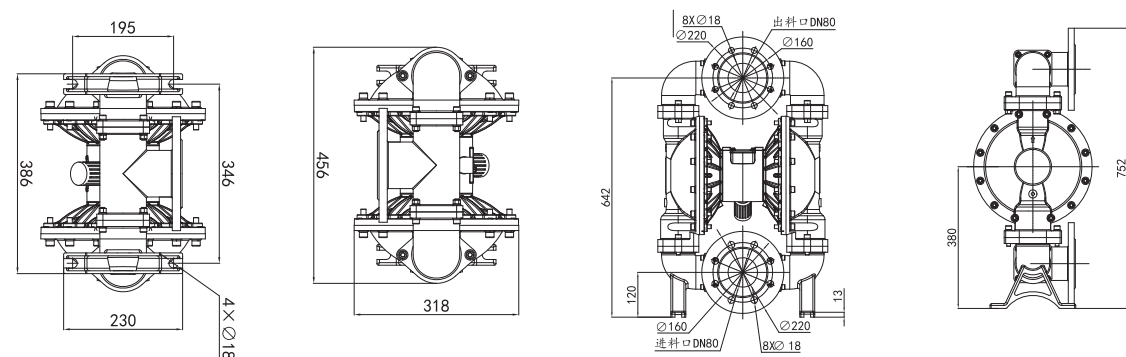
最大工作流量 Max. Flow	150 gpm (568 lpm)
最大工作压力 Max. Working Pressure	120 psi (0.84 Mpa, 8.4 bar)
流体进口尺寸 Fluid Inlet Size	3 in. bsp (f) / 4 in. bsp (f)
流体出口尺寸 Fluid Outlet Size	3 in. bsp (f) / 4 in. bsp (f)
空气进口尺寸 Air Inlet Size	1/2 in. bsp (f)

最大虹吸高度 (干抽或湿抽) Max.Suction Height (dry suction or wet suction)	18 ft. (5.48 m)
最大输送固体颗粒 Max. Permitted Grain	1/4 in. (6.4 mm)
每往复流量 Every Reciprocating Flow	1.03 gal. (3.90 L)
最大往复速度 Max. Reciprocating Speed	145 cpm

安装尺寸图



铝合金 Aluminum alloy

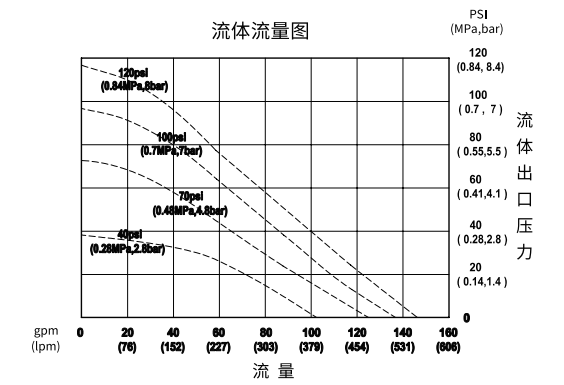


不锈钢/球铁 Stainless steel/Nodular cast iron

QBY3-80/100塑料/氟塑料/衬氟



性能曲线图

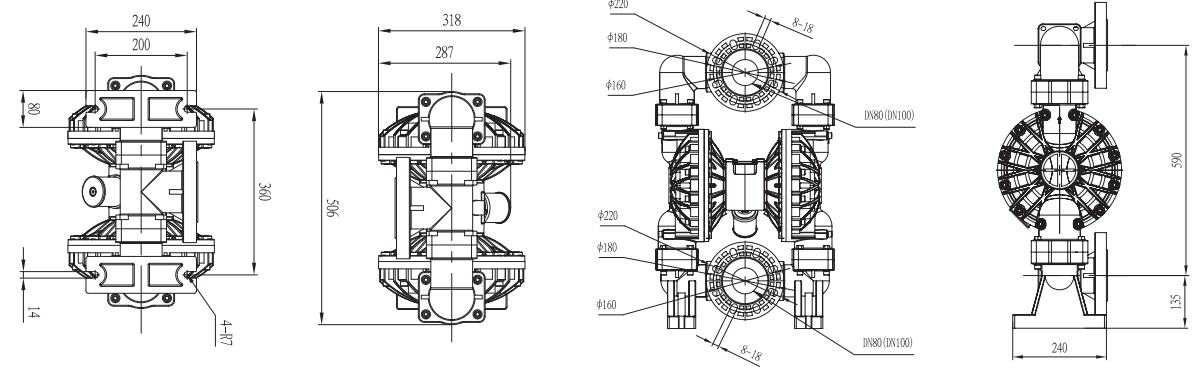


规格参数

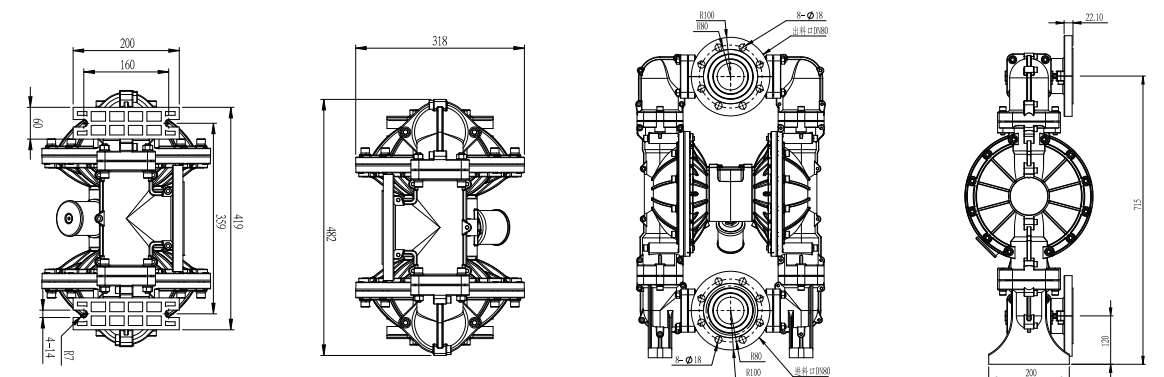
最大工作流量 Max. Flow	150 gpm (568 lpm)
最大工作压力 Max. Working Pressure	120 psi (0.84 Mpa, 8.4 bar)
流体进口尺寸 Fluid Inlet Size	3 in. bsp (f) / 4 in. bsp (f)
流体出口尺寸 Fluid Outlet Size	3 in. bsp (f) / 4 in. bsp (f)
空气进口尺寸 Air Inlet Size	1/2 in. bsp (f)

最大虹吸高度 (干抽或湿抽) Max.Suction Height (dry suction or wet suction)	18 ft. (5.48 m)
最大输送固体颗粒 Max. Permitted Grain	1/4 in. (6.4 mm)
每往复流量 Every Reciprocating Flow	1.03 gal. (3.90 L)
最大往复速度 Max. Reciprocating Speed	145 cpm

安装尺寸图



塑料/氟塑料 PP/PVDF

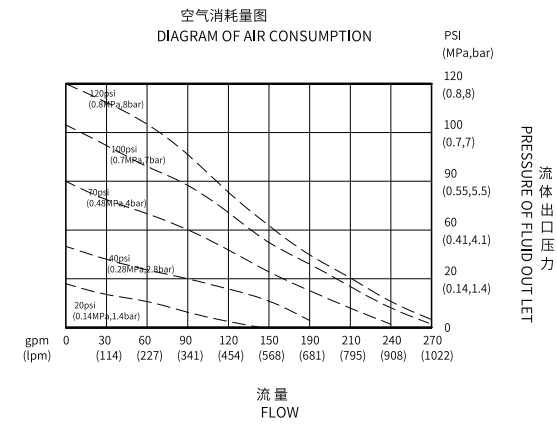


衬氟 Lining PVDF

QBY3-125 铝合金/不锈钢/球铁



性能曲线图

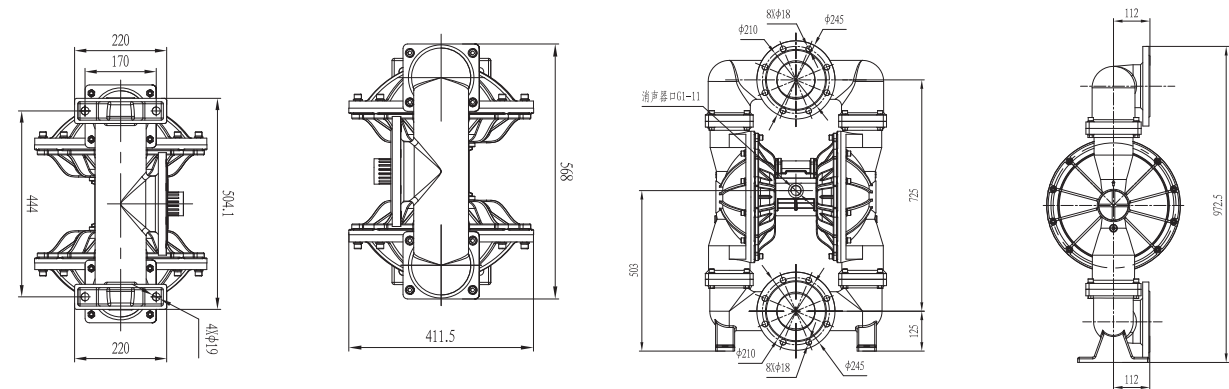


规格参数

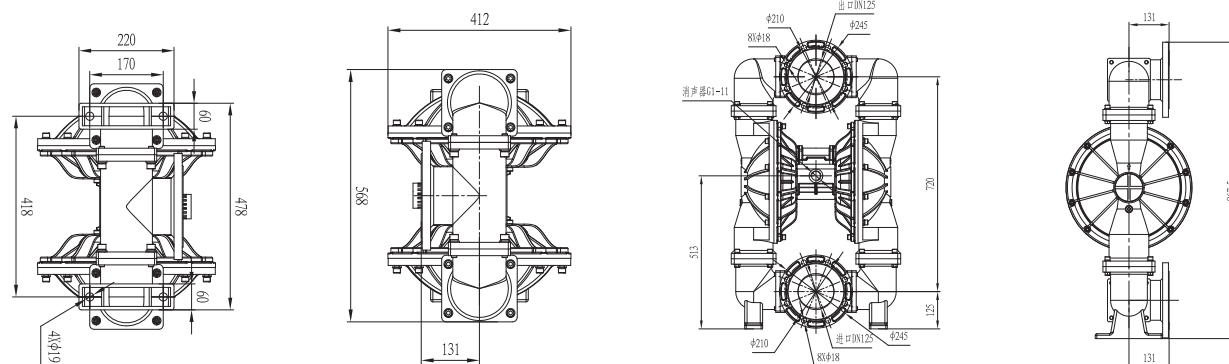
最大工作流量 Max. Flow	275 gpm (1041 lpm)
最大工作压力 Max. Working Pressure	120 psi (0.84 Mpa, 8.4 bar)
流体进口尺寸 Fluid Inlet Size	5 in. bsp (f)
流体出口尺寸 Fluid Outlet Size	5 in. bsp (f)
空气进口尺寸 Air Inlet Size	3/4 in. bsp (f)

最大虹吸高度 (干抽或湿抽) Max.Suction Height (dry suction or wet suction)	25 ft. (7.6 m)
最大输送固体颗粒 Max. Permitted Grain	3/8 in. (9.4 mm)
每往复流量 Every Reciprocating Flow	2.0 gal. (7.6 L)
最大往复速度 Max. Reciprocating Speed	135 cpm

安装尺寸图

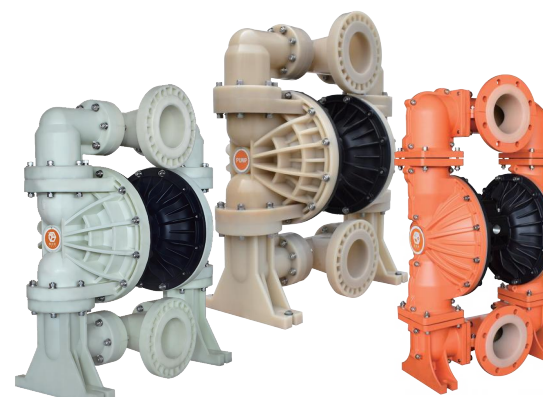


铝合金/不锈钢 Aluminum alloy / Stainless steel

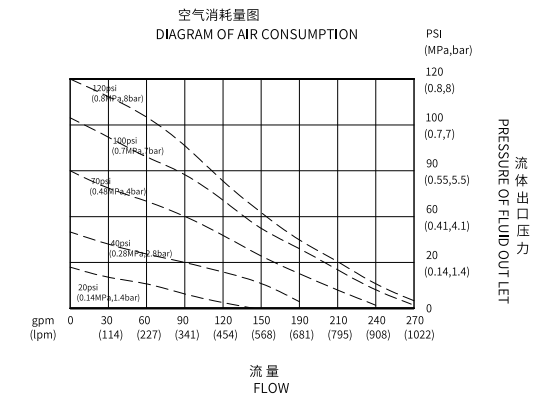


球铁 Nodular cast iron

QBY3-125 塑料/氟塑料/衬氟



性能曲线图

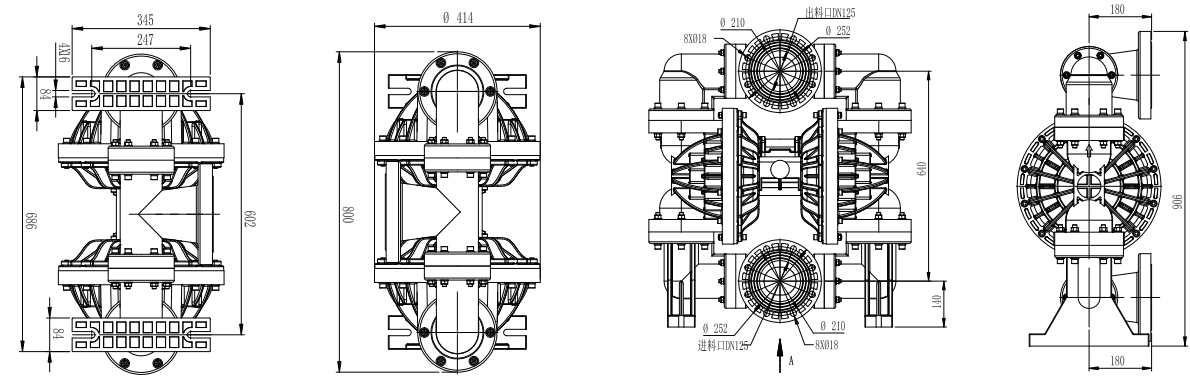


规格参数

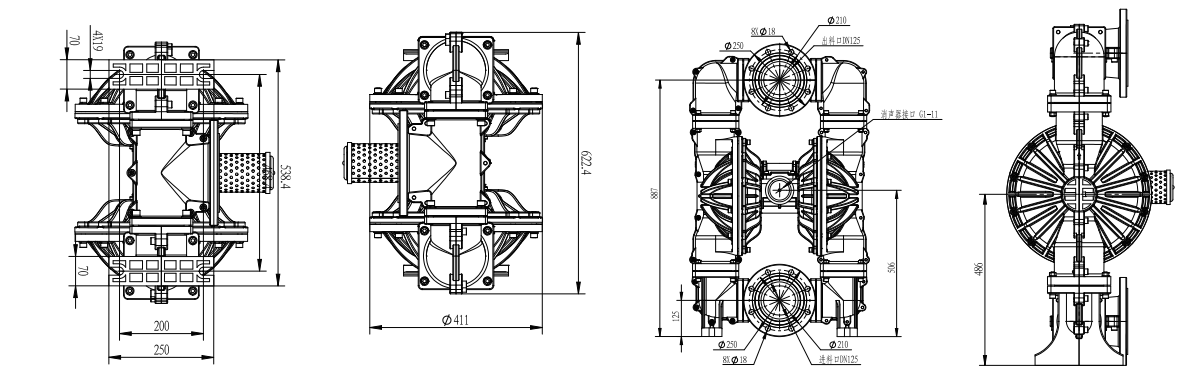
最大工作流量 Max. Flow	275 gpm (1041 lpm)
最大工作压力 Max. Working Pressure	120 psi (0.84 Mpa, 8.4 bar)
流体进口尺寸 Fluid Inlet Size	5 in. bsp (f)
流体出口尺寸 Fluid Outlet Size	5 in. bsp (f)
空气进口尺寸 Air Inlet Size	3/4 in. bsp (f)

最大虹吸高度 (干抽或湿抽) Max.Suction Height (dry suction or wet suction)	25 ft. (7.6 m)
最大输送固体颗粒 Max. Permitted Grain	3/8 in. (9.4 mm)
每往复流量 Every Reciprocating Flow	2.0 gal. (7.6 L)
最大往复速度 Max. Reciprocating Speed	135 cpm

安装尺寸图



塑料/氟塑料 PP/PVDF

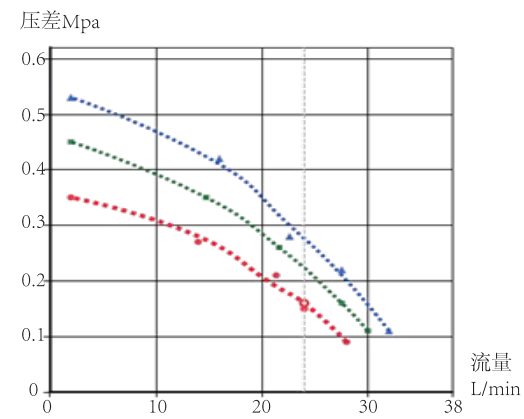


衬氟 Lining PVDF

QBY3-25TTTT 全特氟龙



性能曲线图

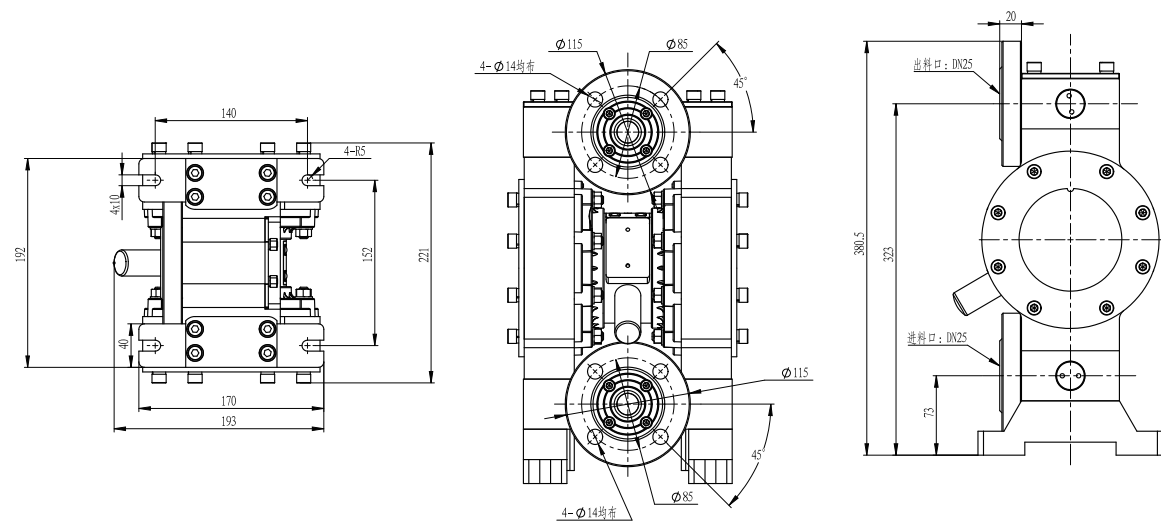


规格参数

最大工作流量 Max. Flow	32 L/min
最大工作压力 Max. Working Pressure	100 psi (0.7 Mpa, 7bar)
流体进口尺寸 Fluid Inlet Size	1 in. bsp (f)
流体出口尺寸 Fluid Outlet Size	1 in. bsp (f)
空气进口尺寸 Air Inlet Size	1/4 in. bsp (f)

最大虹吸高度 (干抽或湿抽) Max.Suction Height (dry suction or wet suction)	2.5m
最大输送固体颗粒 Max. Permitted Grain	3/32 in. (2.5 mm)
每往复流量 Every Reciprocating Flow	0.04 gal. (0.15 L)
最大往复速度 Max. Reciprocating Speed	400 cpm

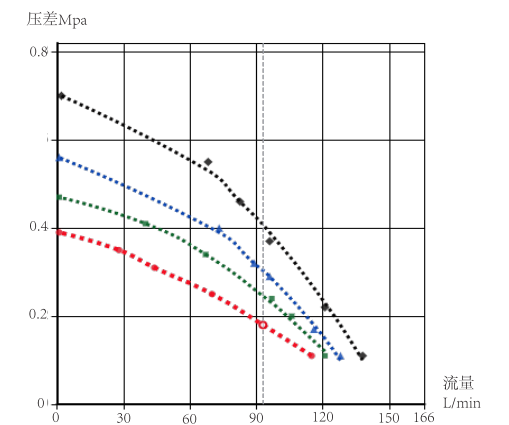
安装尺寸图



QBY3-40TTTT 全特氟龙



性能曲线图



规格参数

最大工作流量 Max. Flow	142 L/min
最大工作压力 Max. Working Pressure	120 psi (0.84 Mpa, 8.4 bar)
流体进口尺寸 Fluid Inlet Size	1-1/2 in. bsp (f)
流体出口尺寸 Fluid Outlet Size	1-1/2 in. bsp (f)
空气进口尺寸 Air Inlet Size	1/2 in. bsp (f)

最大虹吸高度 (干抽或湿抽) Max.Suction Height (dry suction or wet suction)	3.5m
最大输送固体颗粒 Max. Permitted Grain	1/8 in. (3.2 mm)
每往复流量 Every Reciprocating Flow	0.15 gal. (0.57 L)
最大往复速度 Max. Reciprocating Speed	276 cpm

安装尺寸图

